



Waste Water, Drinking Water Treatment & Pipeline System

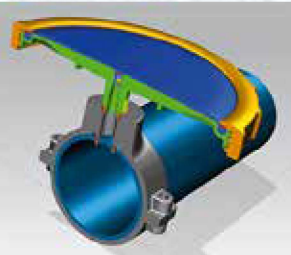


**48.**year

## WASTEWATER TREATMENT EQUIPMENT

### DISC DIFFUSERS

Most preferred model to use in WWTP. Two models: ADD300-12" and ADD230-9", outlet 3/4" or 1"

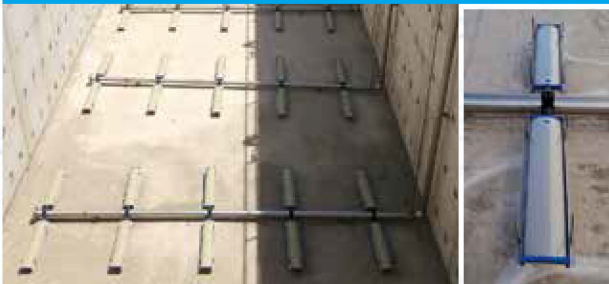


NONE-RETURN VALF  
DIFFUSER



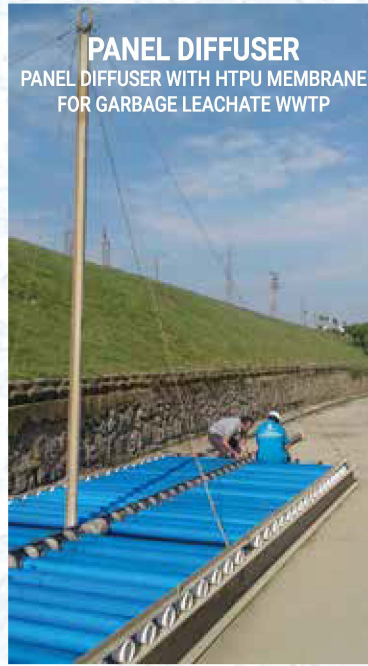
**90.000 pcs 9" Disc Diffuser**  
Tuzla 3rd Stage WWTP ISKI  
ISTANBUL / TURKEY  
(650.000 m3/day)

### AEROSTREP DIFFUSER



### PANEL DIFFUSER

PANEL DIFFUSER WITH HTPU MEMBRANE  
FOR GARBAGE LEACHATE WWTP



Check Valf  
Systems



All AQUAFLEX wastewater treatment equipment has ISO 14001:2015, ISO 9001:2015 quality certificates and is approved by internationally accredited institutions.

### COURSE BUBBLE DIFFUSERS

Stainless coarse bubble tube diffusers and CBD80-3" Coarse bubble disc diffuser models are used to provide homogeneous mixing in pre-balancing tanks, chemical mixing tanks and oil separation processes.

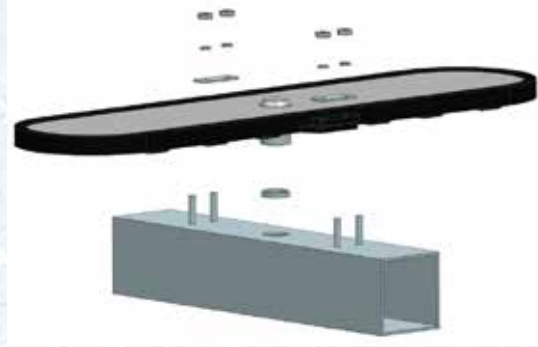


CBD80-3"



## PLATE DIFFUSERS

APD650 and APD1100 Plate Diffusers are designed for best efficiency and use of space in big waste water treatment plants.

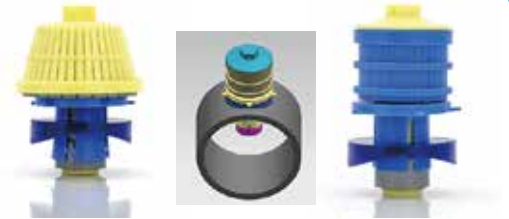


## DRINKING WATER TREATMENT EQUIPMENT

AQUAFLEX filter nozzles for filtration of drinking water are designed to have minimum pressure loss and maximum filtration speed. Made from PP, GFR30, PVDF, ABS, or POM material. AQUAFLEX Filter Nozzles can be used also in sand in activated carbon, in concrete and in ion exchange resin treatment.

AQUAFLEX Filter Nozzle Equipment: Fixing Nut for any type of thread and material; screw anchors and expanding bolts, open filters and pressure filters.

AQUAFLEX Drinking Water Equipment is a DIN EN ISO 9001:2008 certified brand and had obtained WRAS, KTW and TZW certificate. It is safe to be used in processes in food and drinking water.



## RASHING RING

It is produced from Polypropylene (PP) and Stainless Steel (AISI304L & AISI316L) materials.

The Rashing Rings are used to create a liquid gas contact surface and increase the surface area in similar systems such as water cooling and absorption towers, artificial fertilizer, chemical and petrochemical industry, distillation, scrubber, flue gas treatment. It is used as a cooling filler in water cooling towers. In absorption towers, it increases the contact surface of the gas with the liquid for treatment.

## BioAQUA-MBBR



Micro-organisms begin the process "Moving Bed Biofilm Reactor" (MBBR) by creating multiple layers on surface of BioAqua.

BioAqua MBBR is an effective process in waste water treatment plants. BioAqua-MBBR was designed to have perfect contact with liquid in the tank and still providing the maximum surface for biofilm growth.



"WE GIVE LIFE TO THE WATER..."

**aquaflex**

**TUBE DIFFUSER**

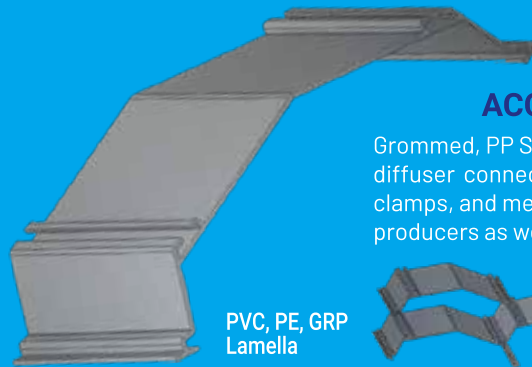
Perfect Solution for long aeration tanks in biological or domestic WWTP.  
In addition to standard sizes any cut-to size dimensions can be produced.



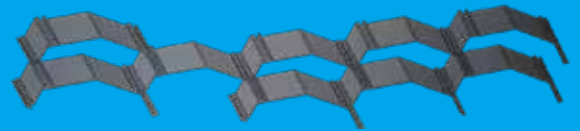
**aquaflex**

**ACCESSORIES & SPARE PARTS**

Grommed, PP Saddles, Nipple and long nipple for pipe-diffuser connection, Z support, fix clamp, adjustable clamps, and membranes suitable for diffusers of other producers as well.



PVC, PE, GRP  
Lamella



PP Saddle



Accessories



Grommed



Adjustable Clamps



Adjustable Clamp - Type2

## REPAIR AND CONNECTION EQUIPMENT

AQUAFLEX repair and connection equipment is excellent. Solution for connection of any pipeline system and reparation of unexpected damages that can appear. AQUAFLEX equipment is suitable for any pipes serving for water, wastewater, gas and other liquid and vaporized material.

### REPAIR CLAMP

Body is AISI304 or AISI316 stainless steel material. Gasket is EPDM, NBR or SBR material. AQUAS10 - one, AQUAS20 - two, AQUAS30 - three bolt section.



# AQUAS10

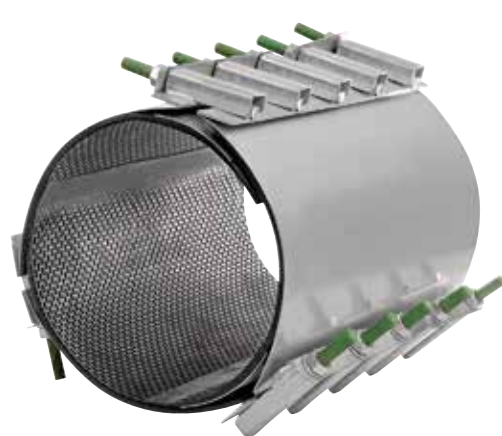
# AQUAS20

# AQUAS30



#### SURFACE BOX

Lid - GGG40  
Body - PA (Polyamide)  
Bolts - SS304  
Adjustable (TELESCOPIC)



AQUASMini Snap Clamp and Wrap Clamp designed for pipes with small diameter.

### COUPLING AND TAPPING EQUIPMENTS

Body is AISI304 or AISI316 stainless steel material. Gasket is EPDM, NBR or SBR material. Couplings, Flanged and Muff Outlet Clamps.



#### AQUA-TAPPING SADDLE

At water and gas lines for PE, PVC pipes Ø63, 75, 90, 110mm Connection Equipment with Ø25, 32 outlet diameters



Stainless Steel is in accordance with ISO 7005-1 and DIN 2476/2642 standarts. Following certificates were obtained for AQUAFLEX repair and connection equipment : KTW certificate, ISO 14001:2004, ISO 9001:2008, TSE certificate.

### CONNECTION EQUIPMENT

AUC Coupling and AUFA Flange Adaptor. Steel, high Quality Ductile Iron GGG40 and Epoxy Coating for Asbestos, PE, PVC, CTP, Steel, Ductile Iron Pipes.



The connection can be Dacromet, Galvanize and Stainless Steel Nuts & Bolts.



